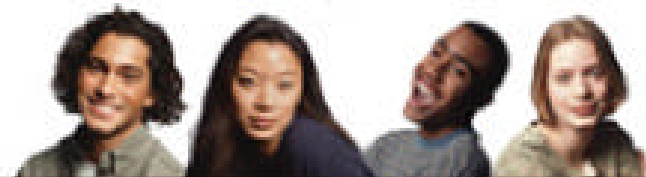


impac **TEEN**



*A Policy Research Partnership
to Reduce Youth Substance Use*



Supported by
The Robert Wood Johnson Foundation

Frank Chaloupka Ph.D.
Principal Investigator

ImpacTeen State Illicit Drug Policy Project

Duane C. McBride Ph.D.
Principal Investigator

American Society of Criminology
November 2000

Andrews University

RAND

MayaTech Corporation

THE
ROBERT WOOD
JOHNSON
FOUNDATION

UIC

ImpacTeen is part of Reducing the Gap: Research Informing Practice for Healthy Youth Behavior, supported by The Robert Wood Johnson Foundation and administered by the University of Illinois at Chicago.

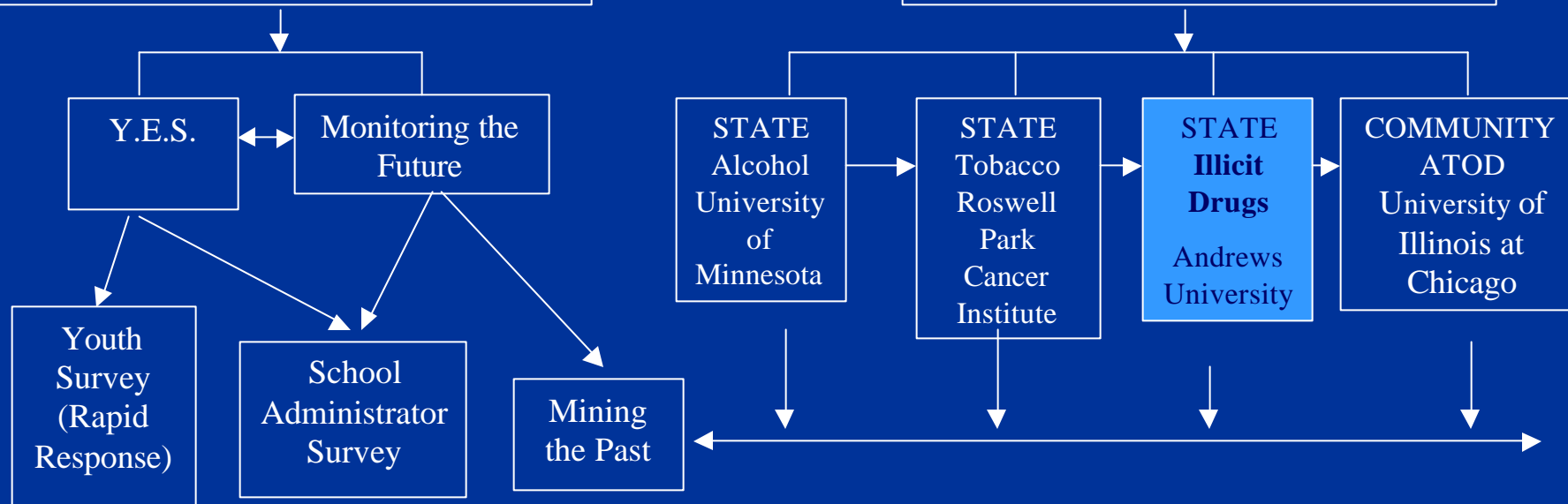
Bridging the Gap Flowchart

Y.E.S.

ImpacTeen

University of Michigan
Institute for Social Research

University of Illinois at Chicago
Coordinating Center



General project objectives involve surveillance & research

- **Develop a conceptual framework to guide the project objectives.**
 - **Develop a legislative tracking system that identifies variations in state drug laws and policies.**
- 3. Examine differences in how states attempt to control drug use through law and policy.**

- 4. Provide a common source of relevant state level legislative and environmental data.**
- 5. Permit the examination of how differences in state law, policy and environment relate to perceptions about drugs and actual drug use.**
- 6. Permit the examination of how perceptions, drug use, and environment relate to the development of law.**

The research team

- Principal Investigator: Duane McBride
Andrews University
- Co-Principal Investigator: Rosalie Liccardo Pacula
RAND and NBER
- Project Director: Curt VanderWaal
Andrews University
- Legislative Data Base: Jamie Chriqui and Deborah Reichmann
The MayaTech Corporation
- Principal Consultant: Richard Clayton
University of Kentucky
- ImpacTeen Core Liaison: Yvonne Terry-McElrath
University of Michigan

The conceptual framework

- 1. An initial guide to organizing the literature and selecting/collecting data.**
- 2. An initial guide to data analysis.**
- 3. Attempt to be comprehensive and realistic.**

Initial priority research questions

- **What are the differences in state drug laws and penalties?**
 - **What are the differences between drug policies (treatment expenditures), actual numbers in treatment, and changes in youth drug use?**
- 3. To what extent do states take a comprehensive approach to marijuana policy?**