

ImpacTeen: Alcohol Component



Alcohol Epidemiology Program University of Minnesota:

Alexander C. Wagenaar, PhD

Rhonda Jones-Webb, DrPH

Colette LaFond, JD

Amy Shomshak, BA

Sophia Gray, DrPharm

Eileen M. Harwood, PhD

Traci L. Toomey, PhD

Darin J. Erickson, MA

ImpacTeen: Alcohol Component

Objectives

- Identify & track indicators of alcohol-related health problems
- Identify & track changes in state-level alcohol policies
- Produce summaries of patterns and trends in state-level alcohol policies



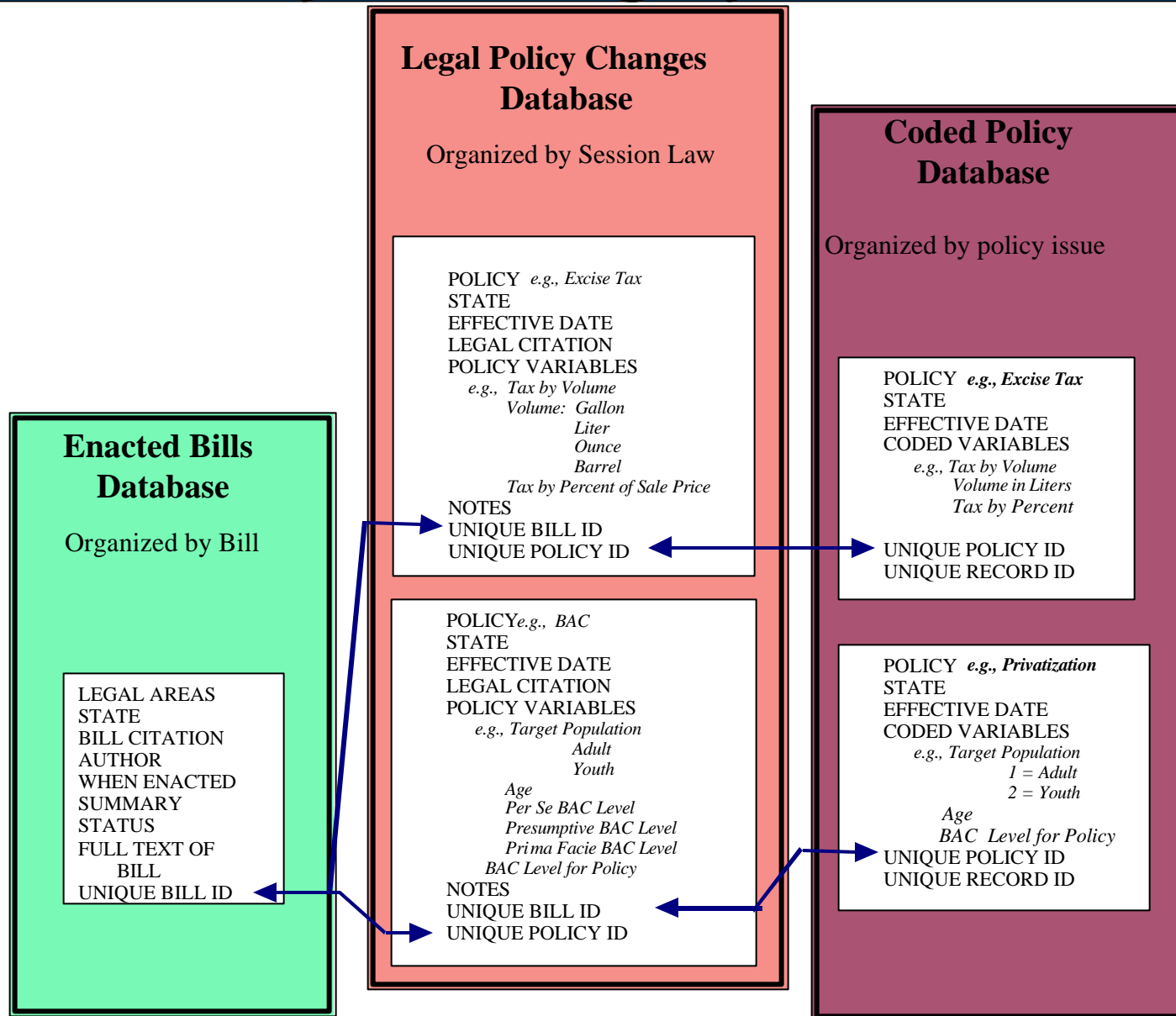
ImpacTeen: Alcohol Component

Structure

- Alcohol problem indicator tracking system
- Alcohol policy tracking system



Alcohol Policy Tracking System



Alcohol Database: Enacted Legislation

Enacted Bills Database

Each case = bill

Full Text of ALL
Enacted Alcohol Legislation
(50 states and Federal Govt.)

STATE
BILL CITATION
AUTHOR
WHEN ENACTED
SUMMARY
LEGISLATIVE HISTORY
FULL TEXT OF BILL
LEGAL CATEGORIES
UNIQUE BILL ID



Alcohol Database: Enacted Legislation

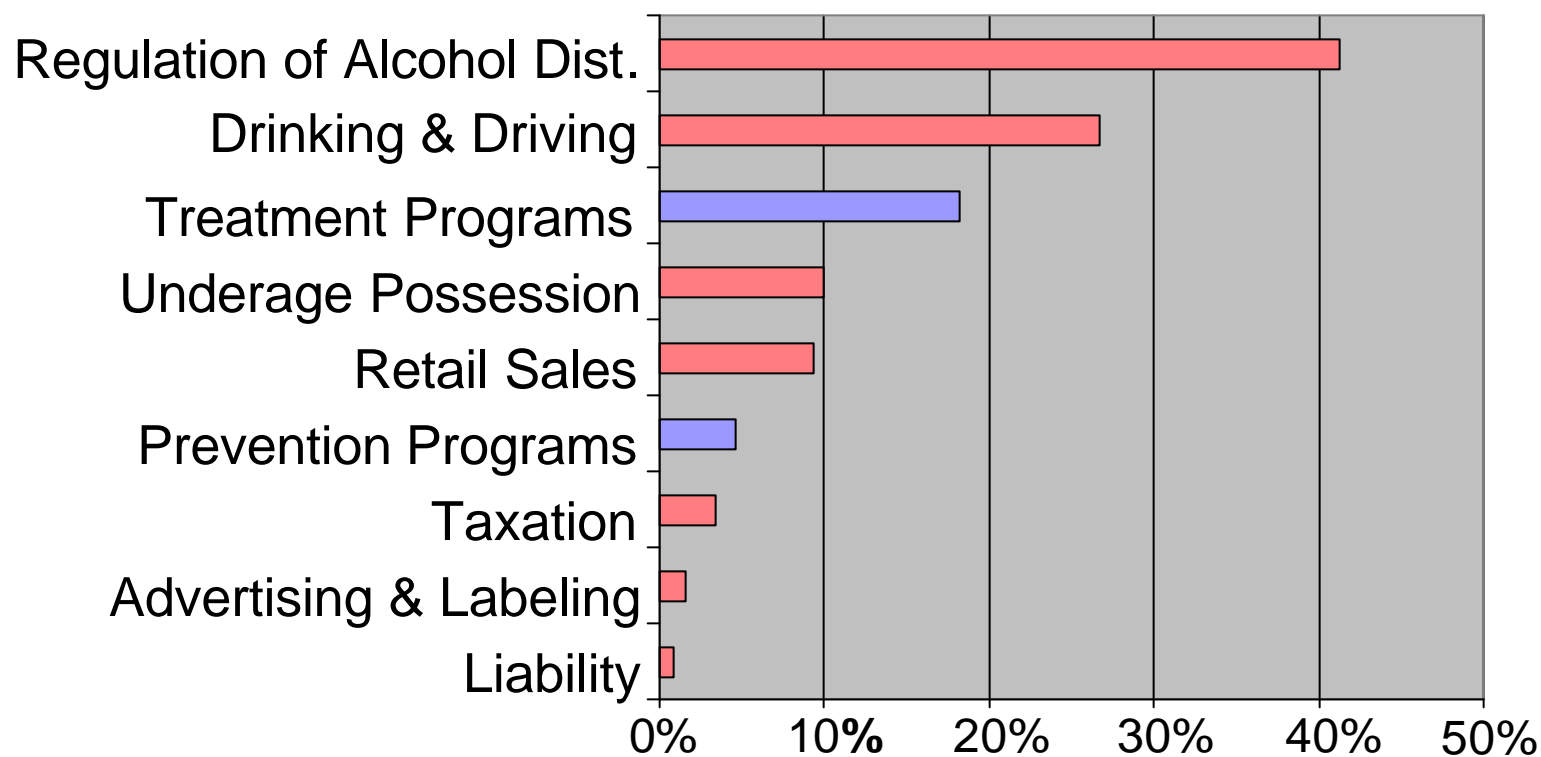
Categories

- Advertising & Labeling
- Drinking and Driving
- Liability for Alcohol Related Injuries
- Prevention Programs
- Regulation of Alcohol Distribution
- Retail Sales Transactions
- Taxation
- Treatment
- Underage Possession



Alcohol Database: Enacted Legislation

Percent by Type 1998-1999



n = 1182



Alcohol Database: Select Policy Changes

Legal Policy Database

Each case = specific policy change

POLICY

e.g. Excise Tax

STATE

LEGAL CITATION

EFFECTIVE DATE

POLICY VARIABLES

e.g., Beverage Type

Alcohol Range

Tax by Quantity

Tax by Percent

NOTES

UNIQUE BILL ID

UNIQUE POLICY ID



Alcohol Database: Policy Changes

Drinking-driving BAC limits

- General drivers
- Youth drivers
- Boaters
- Snowmobilers



Alcohol Database: Policy Changes

Drinking-driving penalties

- Fines
- Prison
- License
- Vehicle
- Mandatory Treatment/Restitution



Alcohol Database: Policy Changes

Economic Policies

- Privatization
- Taxation
 - by quantity
 - by percent



Alcohol Database: Policy Changes

Youth access

- Server training
- Keg registration
- Minimum drinking age



Alcohol Database: Coded Variables

Coded Policy Database

Each case = policy change

POLICY

e.g., Excise Tax

STATE

EFFECTIVE DATE

CODED VARIABLES

e.g., Tax per Liter

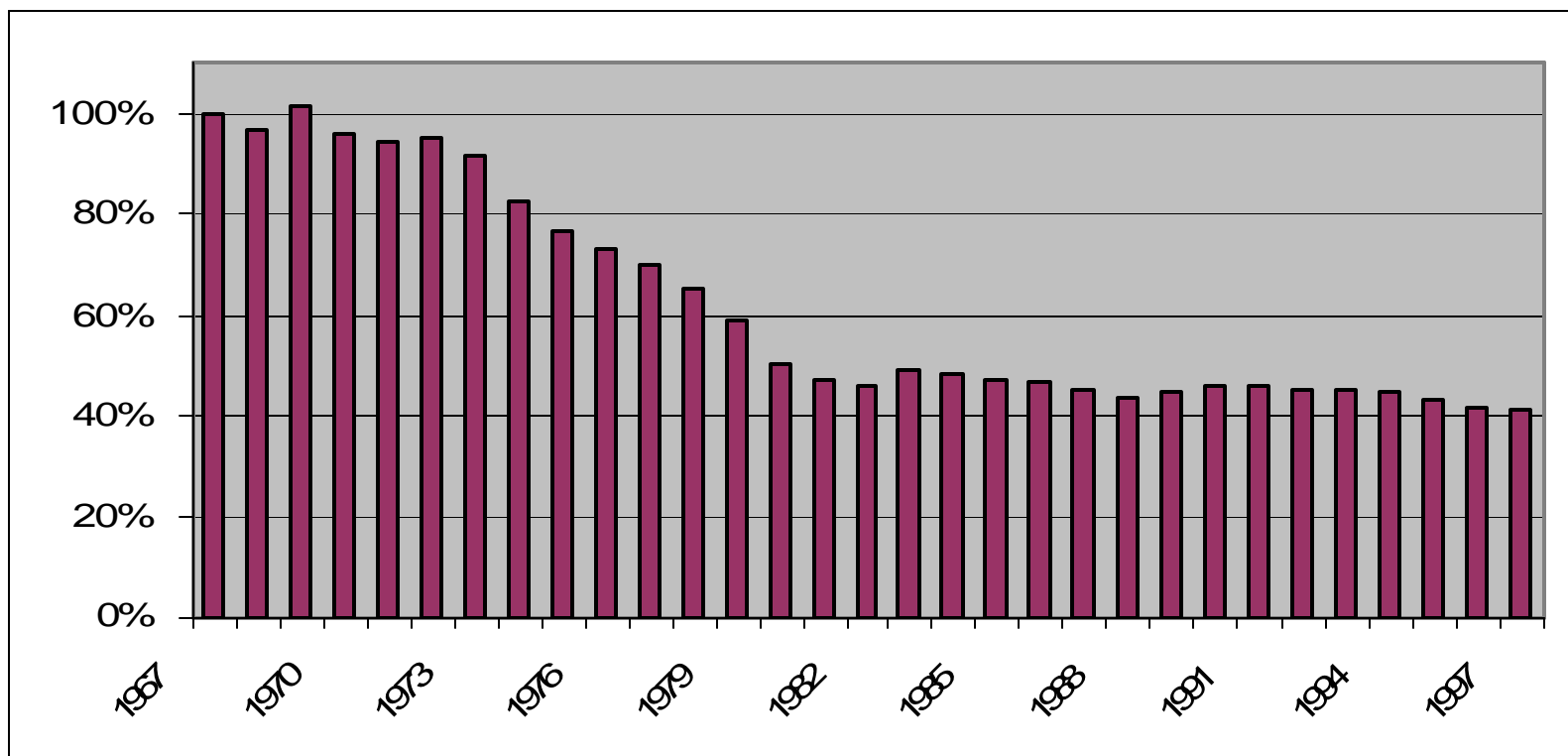
*Amount adjusted
for Inflation*

UNIQUE POLICY ID

UNIQUE RECORD ID

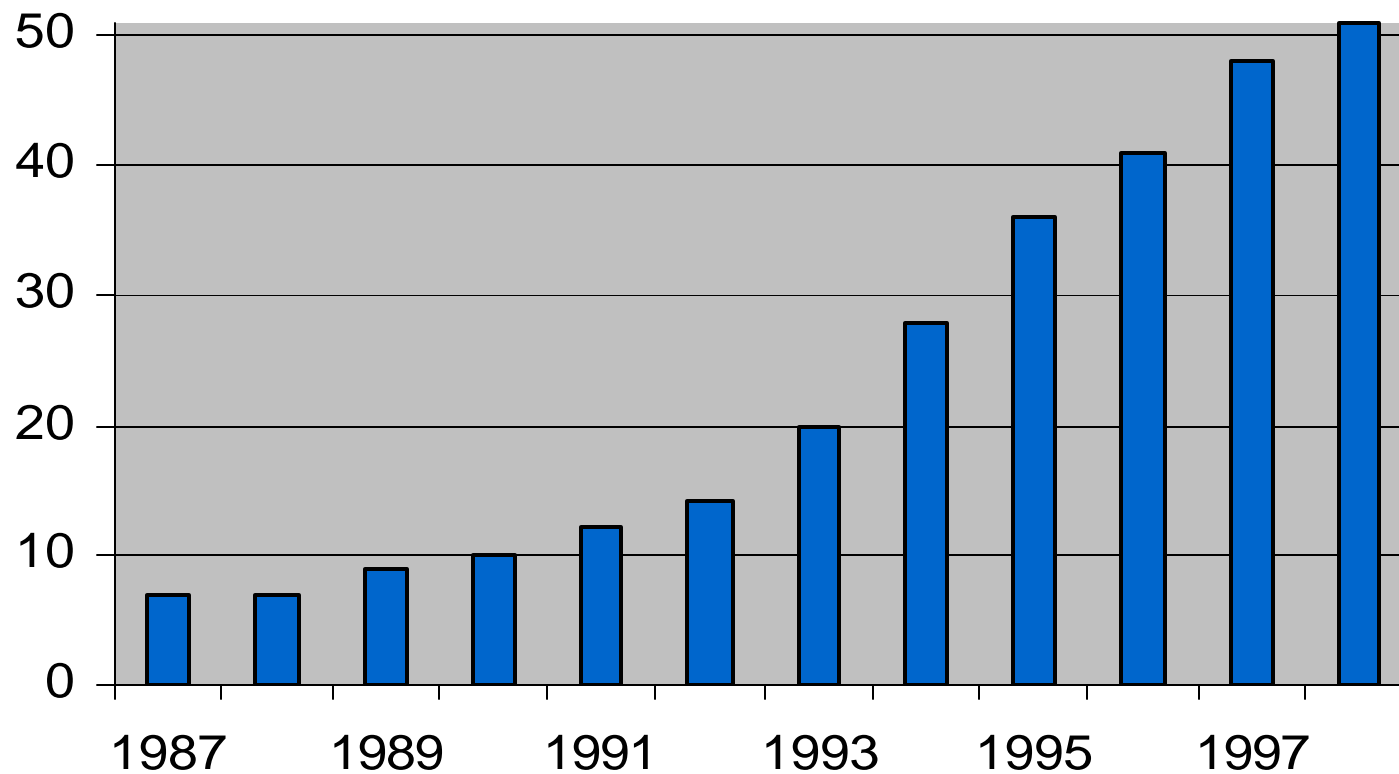
Alcohol Database: Coded Variables

Percent Change in Real Value of Beer Excise Taxes 1968-1998



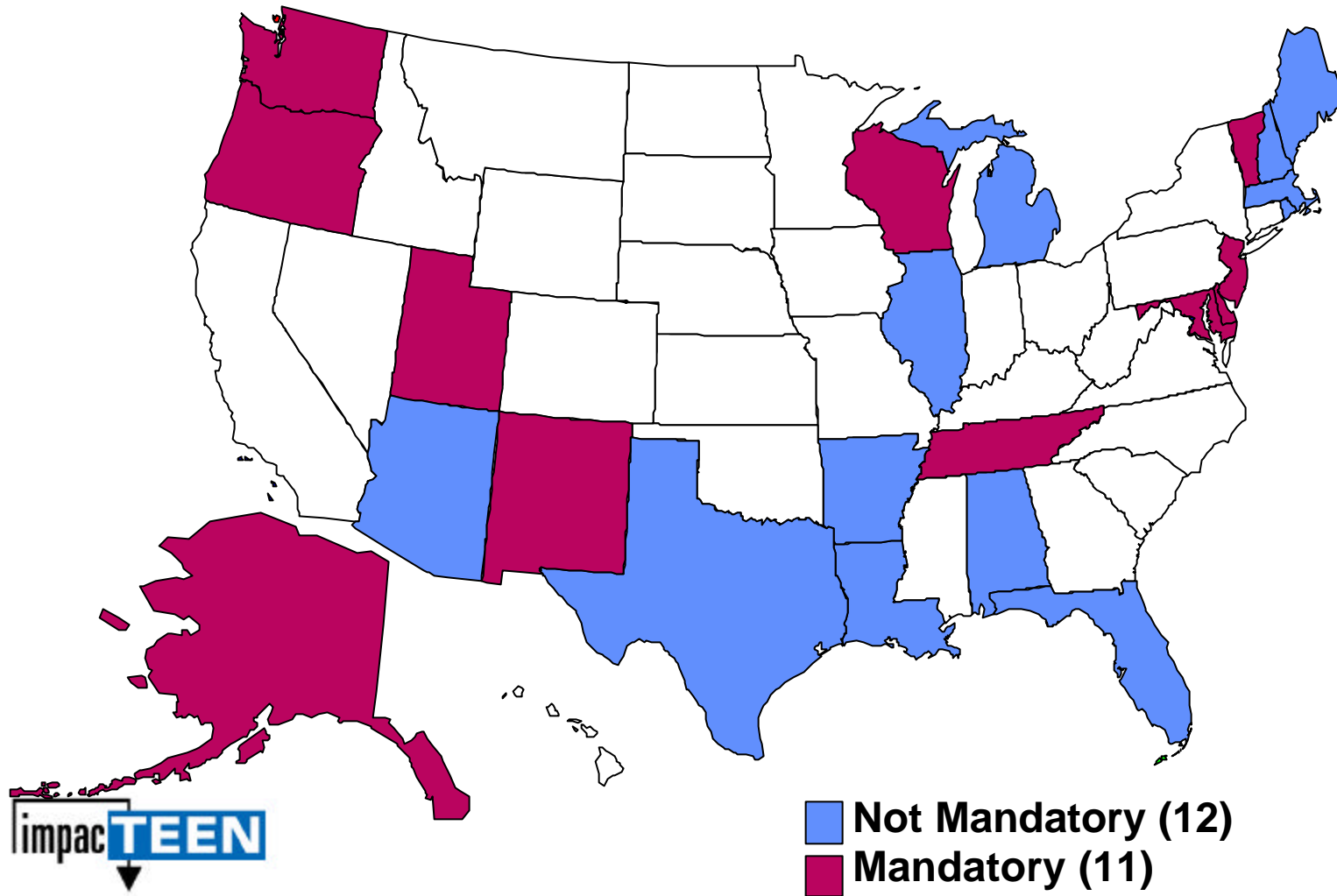
Alcohol Database: Coded Variables

Count of States with Youth BAC Laws

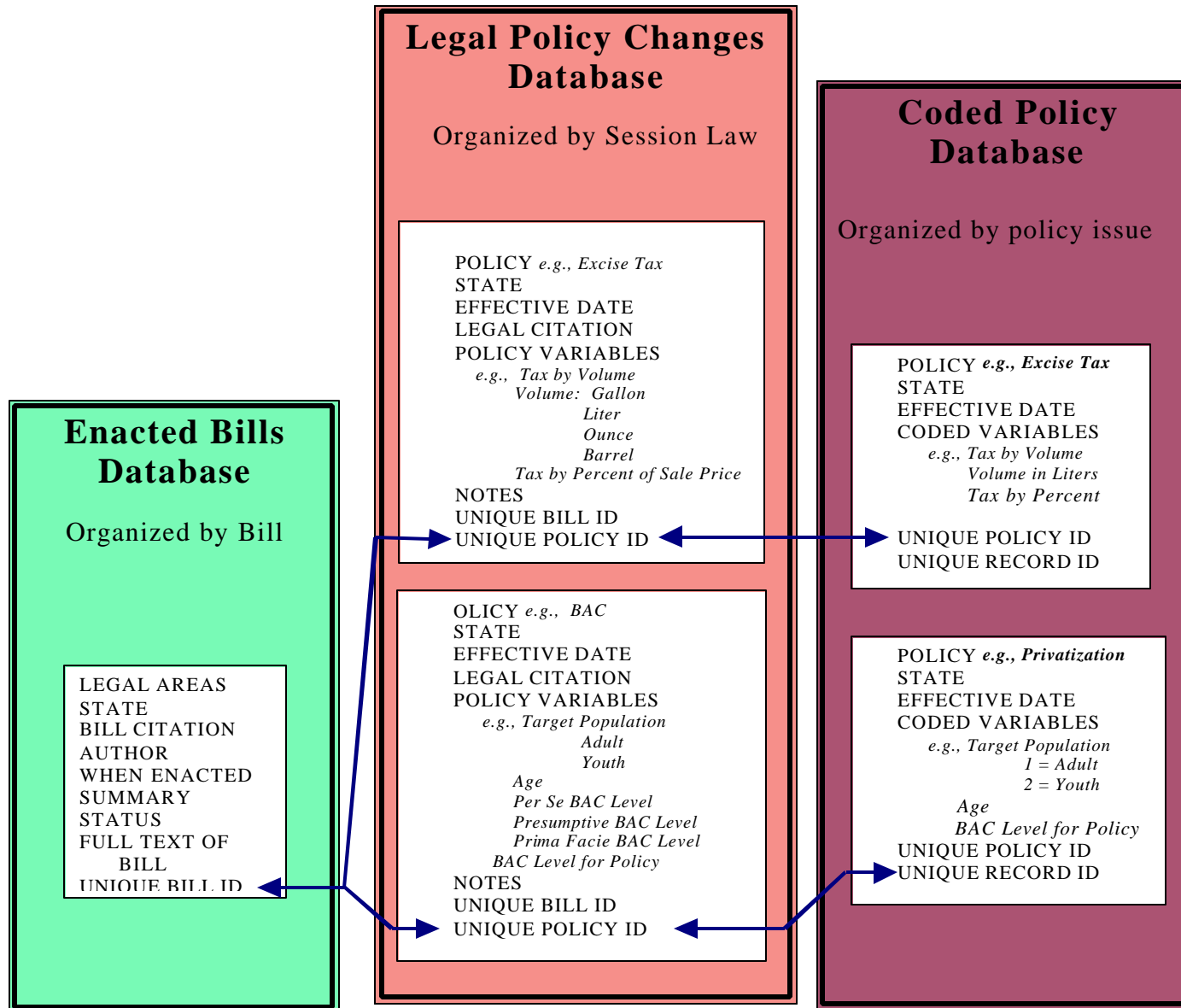


Alcohol Database: Coded Variables

States with Server Training Provisions



Alcohol Policy Tracking System



Data Collection Issues

Inconsistencies across states

- “Control” v. “Licensure” States
- Local v. State Level Policies
- Legal Terms & Concepts



Data Collection Issues

Access to materials

- Across all states (regs)

Expense

- Monetary
- Time



Alcohol Database: Progress to Date

Baselines completed

- Law as of 1/1/98

Historical information

- Laws 1/1/68 - 1/1/94
- Laws 1/1/94 - 1/1/98



www.epi.umn.edu/alcohol

A L C O H O L
E P I D E M I O L O G Y P R O G R A M



University of Minnesota

