

**ImpacTeen: A Policy Research Partnership to
Reduce Youth Substance Use**

ImpacTeen Community Level Data Collection

www.uic.edu/orgs/impacteen

*ImpacTeen is part of Bridging the Gap: Research Informing Practice for
Healthy Youth Behavior, supported by The Robert Wood Johnson
Foundation and administered by the University of Illinois at Chicago.*



UIC Project Staff

Frank Chaloupka, PhD, PI

Brian Flay, DPhil, Co-PI

Sandy Slater, MS, Deputy Director

Melanie Ann Wakefield, PhD, Researcher

Rosalie Pacula, PhD, Researcher

Yvonne Terry, MS, Researcher

Kimberley Conrad-Junius, Communications

Anna Sandoval, MPH, Projects Coordinator

John Gardiner, PhD, Researcher

Paul Goldstein, PhD, Researcher

Dianne Barker, MHS, Consultant

Michael Grossman, PhD, Consultant

Henry Saffer, PhD, Consultant



Key Project Partners

State Alcohol Research

University of Minnesota

Alexander C. Wagenaar, PhD

Rhonda Jones-Webb, PhD

State Tobacco Research

Roswell Park Cancer Institute

Gary Giovino, PhD

K. Michael Cummings, PhD

Andrew Hyland, PhD

State Illicit Drug Research

University of Delaware

Lana Harrison, PhD

Cliff Butzin, PhD



Data Collection Contractor

Battelle, Inc.

Baltimore, MD

Jaana Myllyluoma, Ph.D.

Pamela Clark, Ph.D.



Community Level Data Collection Objectives

- To develop comparable, in-depth community-level information on policies, market mechanisms, and environmental, social and institutional influences on youth substance use.
- To examine effects of policies, programs and practices at the community and/or school levels as they relate to youth substance use.
- To merge community-level data with other Bridging the Gap data to study factors associated with youth substance use.

Community Level Data Collection

Conducted in about 1,000 communities in four years:

- 900 communities from Monitoring the Future
- 100 Rapid Response communities



Community Level Data Collection

How to define community?



Community Level Data Collection Components

- **On-site**
 - In-store observations
 - Outdoor observations
 - Local policies and regulations
- **Telephone Interviews**
 - Retail Store Managers and Clerks
 - Key Community Informants
- **Archival Information**

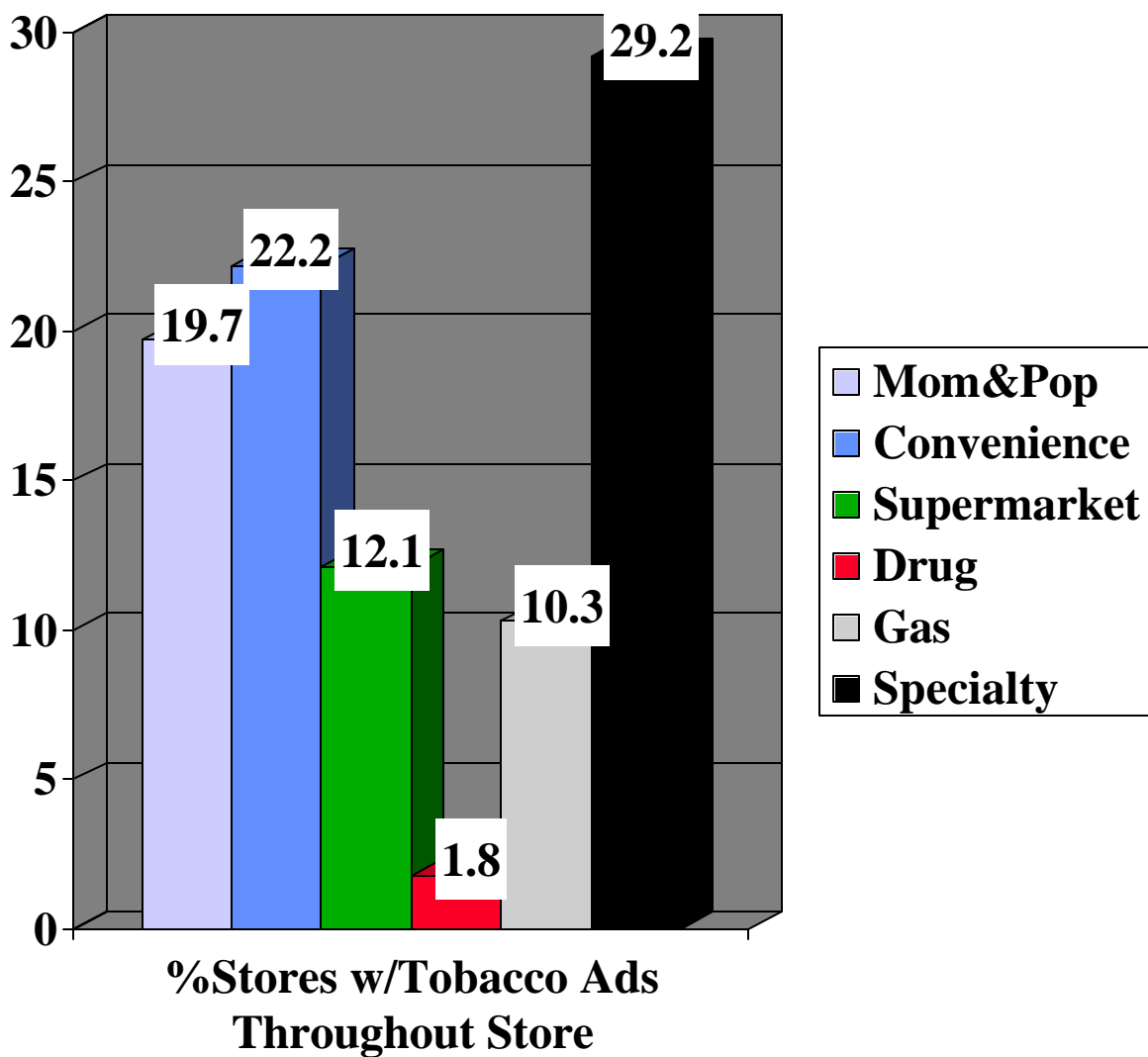
ON-SITE: In-store observations

Conduct store observations in up to 30 retail outlets per community site on:

- Type and size (ie., cash registers) of store
- Product placement
- Price for Marlboro, Newport, lowest priced cig, Skoal Bandit, Bud
- Promotions (ie., two for one, gift with purchase, cents off)
- Functional objects
- Presence of counter advertising
- Interior advertising environment
- Exterior advertising environment

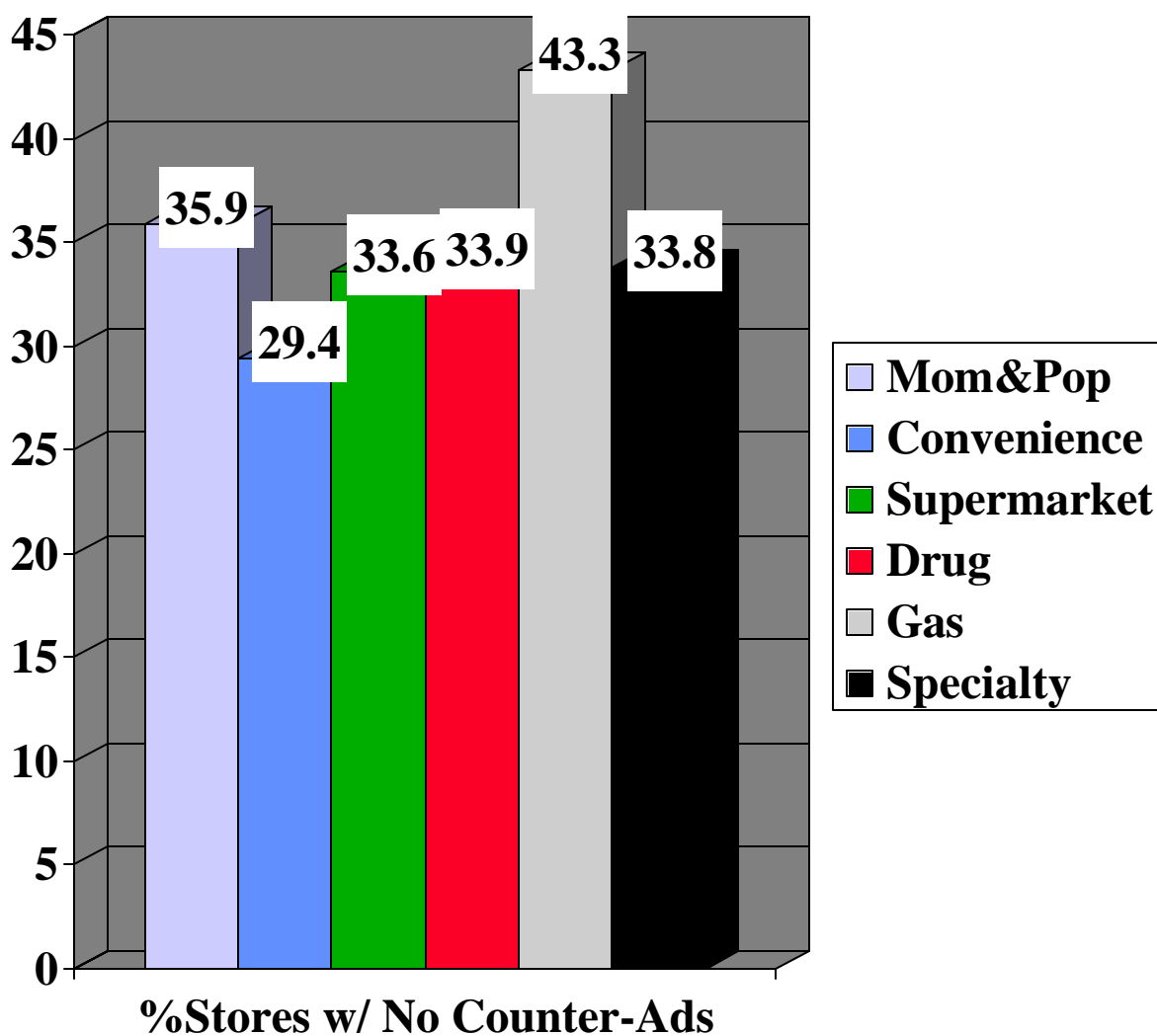
Preliminary Data

Location of Interior Store Advertising: Tobacco By Type of Store



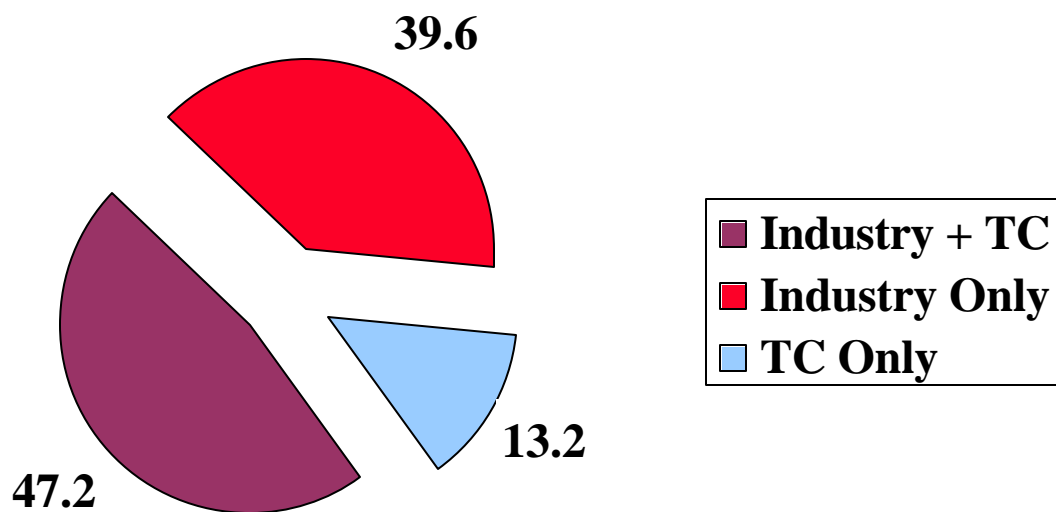
Preliminary Data

Presence of Tobacco Counter-Advertising By Type of Store



Preliminary Data

Presence of Tobacco Counter-Advertising By Type of Counter-Ad Convenience Stores Only



ON-SITE: Outdoor observations

Collect information on outdoor community characteristics including:

- Observations around index school
(i.e., visible retailers and advertising, litter, students/staff smoking.)
- Observations of the community environment
(i.e., presence of law enforcement, youth activity centers, parks, garbage on the street)
- Number of pro- and anti-tobacco and alcohol billboards located on pre-designated route
- General level of outdoor advertising

ON-SITE:

Local Policies and Regulations retrieval

- Copies of local ATOD-related ordinances
- Copies of health regulations

TELEPHONE INTERVIEWS: Retail Store Managers and Clerks

Information is collected on:

- Store environment
- Store policies and practices related to selling age-restricted products
- Training of staff on tobacco and alcohol
- Respondent's opinions on issues related to minors' access to tobacco and alcohol
- Respondent's impressions of enforcement of laws restricting youth access to tobacco and alcohol

TELEPHONE INTERVIEWS: Key Community Informants

Key informants include health department personnel, police chief and officers, coalition leaders, and others.

- Constructed in separate interview modules
- Key informants are identified through a self-validating referral process, i.e., only modules to which the respondent self-refers are administered

TELEPHONE INTERVIEWS: Key Community Informants

General Modules to begin the referral process:

- Health Department
- Police Department/Officer
- Coalition Leader
- Universal (community environment)

Targeted Modules:

- Grassroots political or media advocacy and public education
- Youth tobacco & alcohol sales surveillance and enforcement
- Drug treatment programs

Ordinance Feedback Modules:

- Tobacco possession
- Keg registration
- Inhalants
- Drug Paraphernalia
- Curfew



ARCHIVAL INFORMATION

Collected from established sources to enhance and validate information obtained from community level data collection.

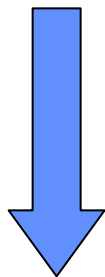
Examples of archival sources include:

- ANRF Local Tobacco Control Ordinance Database
- Info USA business list
- Newspaper clipping services
- Media ratings and audience estimates

Community Level Data Collection: On-site, Telephone and Archival

Next Steps

- **Revisions** to Year 1 instruments
- **Pilot** additional instruments/modules
- **Collect** Years 2-4
- **Analyze, merge, analyze**



Publish

